

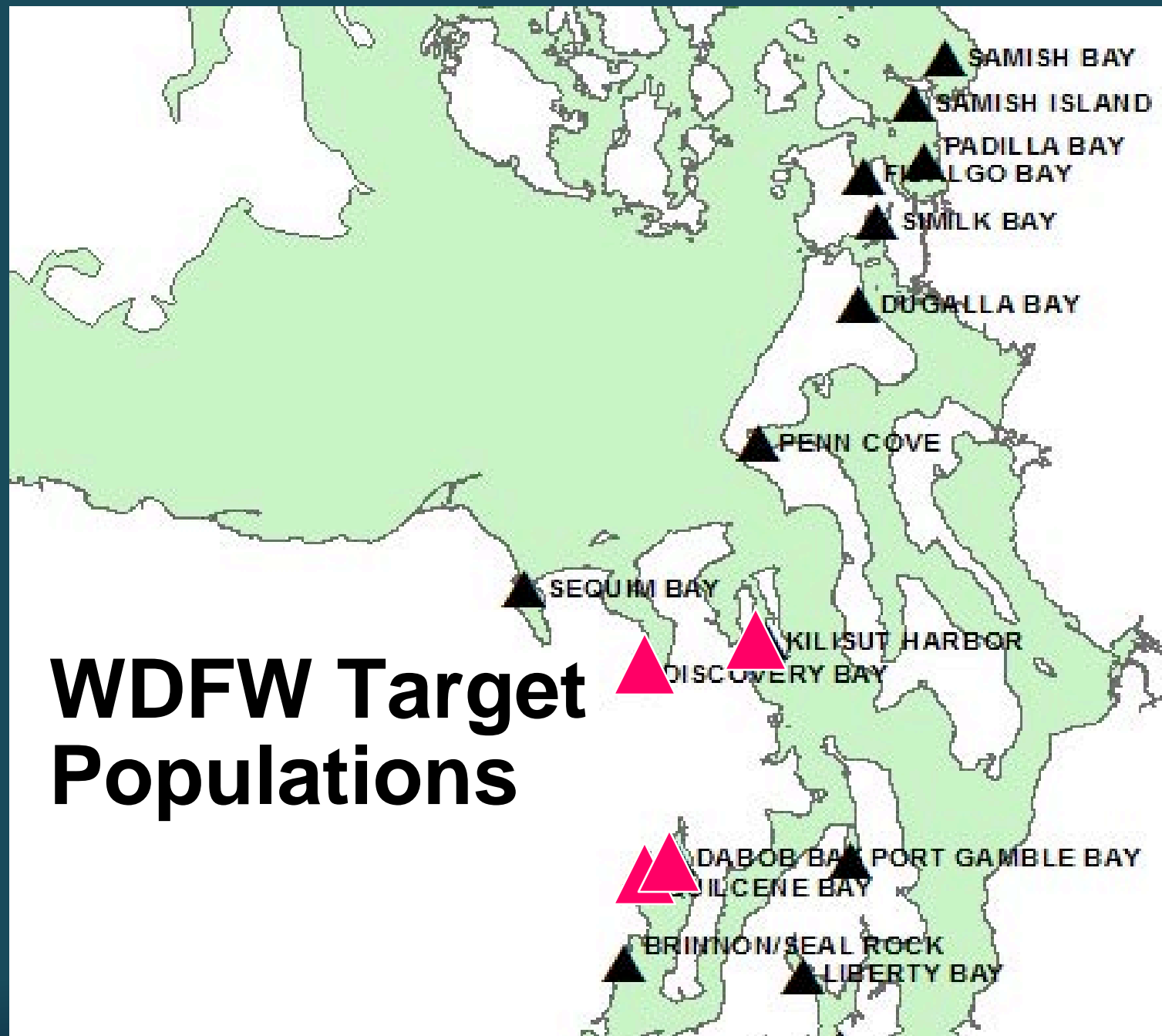
MRC Olympia Oyster Projects in Discovery & Quilcene Bays



Jefferson County Marine Resources Committee



WDFW Target Populations



MRC Restoration Strategies

- Protect current populations
- Enhance habitat structure
- Add new Olympia oysters

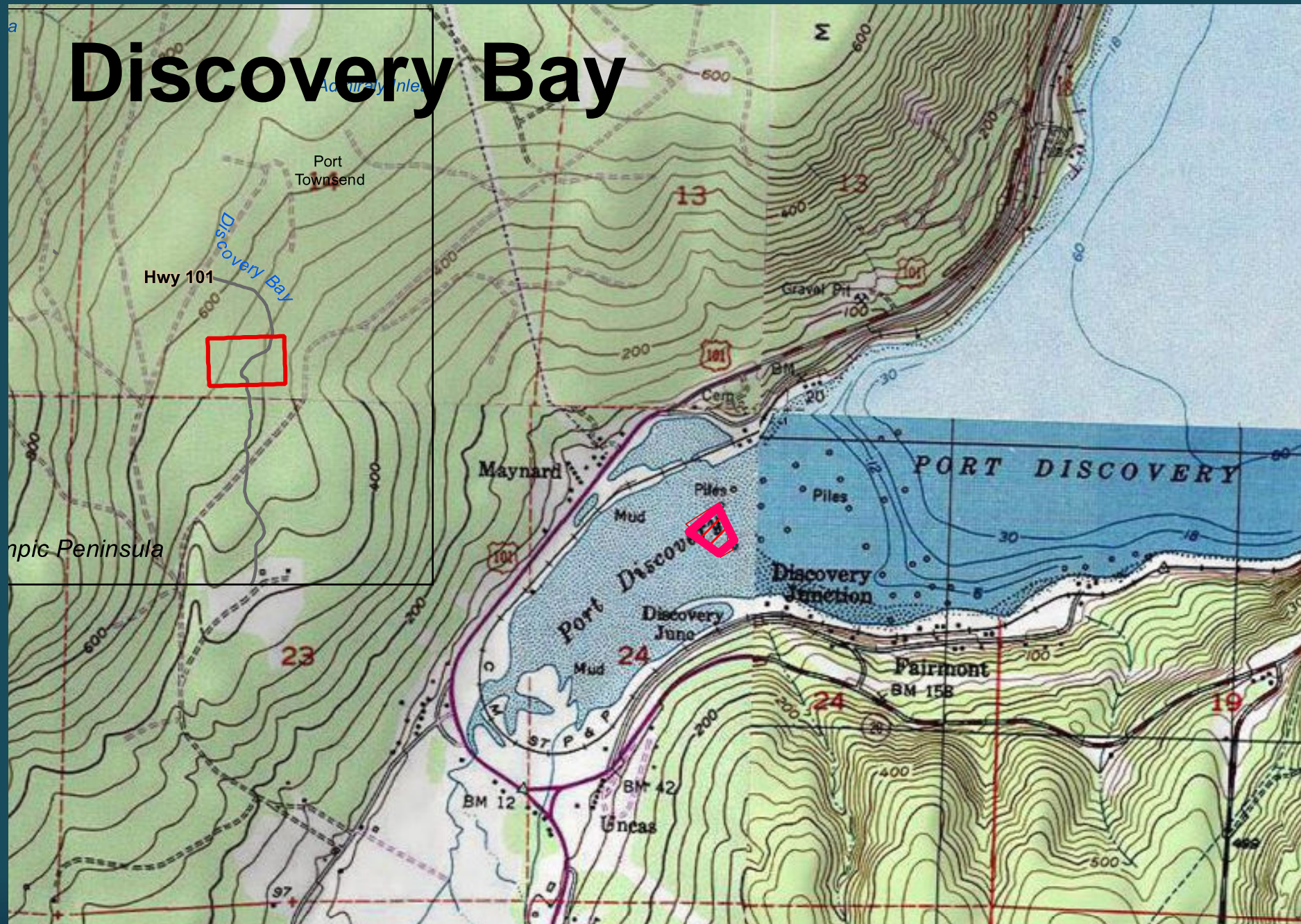


Discovery Bay Project

- Protect current population
- Enhance habitat structure



Discovery Bay



Project Location



Head of Discovery Bay
Olympia Oyster Enhancement
Preliminary Macro-Algae Survey
May 15, 2014

Legend

- May 15, 2014 - Macroalgae Survey GPS Points

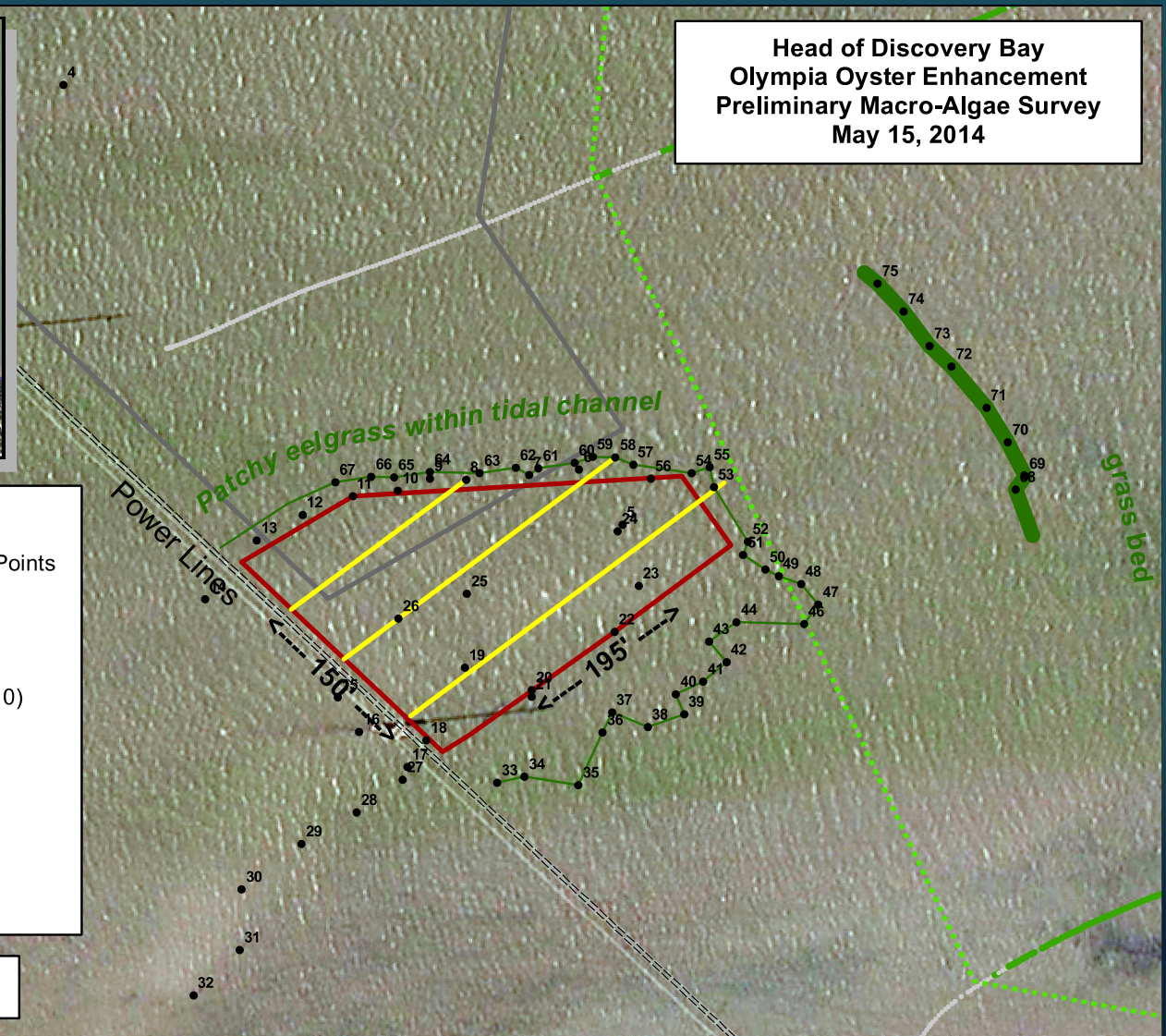
Eelgrass boundaries

- DENSE Eelgrass Boundary (May 2014)
- PATCHY Eelgrass Boundary (May 2014)
- ... Landward Eelgrass Boundary - video (2010)
- Centerline & Interior Transects

Underwater video (Norris, 2010)

- No eelgrass
- Eelgrass observed
- ▭ New proposed enhancement area
- ▭ Previously proposed area

0 25 50 100 150 200 Feet



Habitat Enhancement

- 1/2 ac -- Aug 2014
- 100 bags clean shell
- \approx 2 shells/sq ft

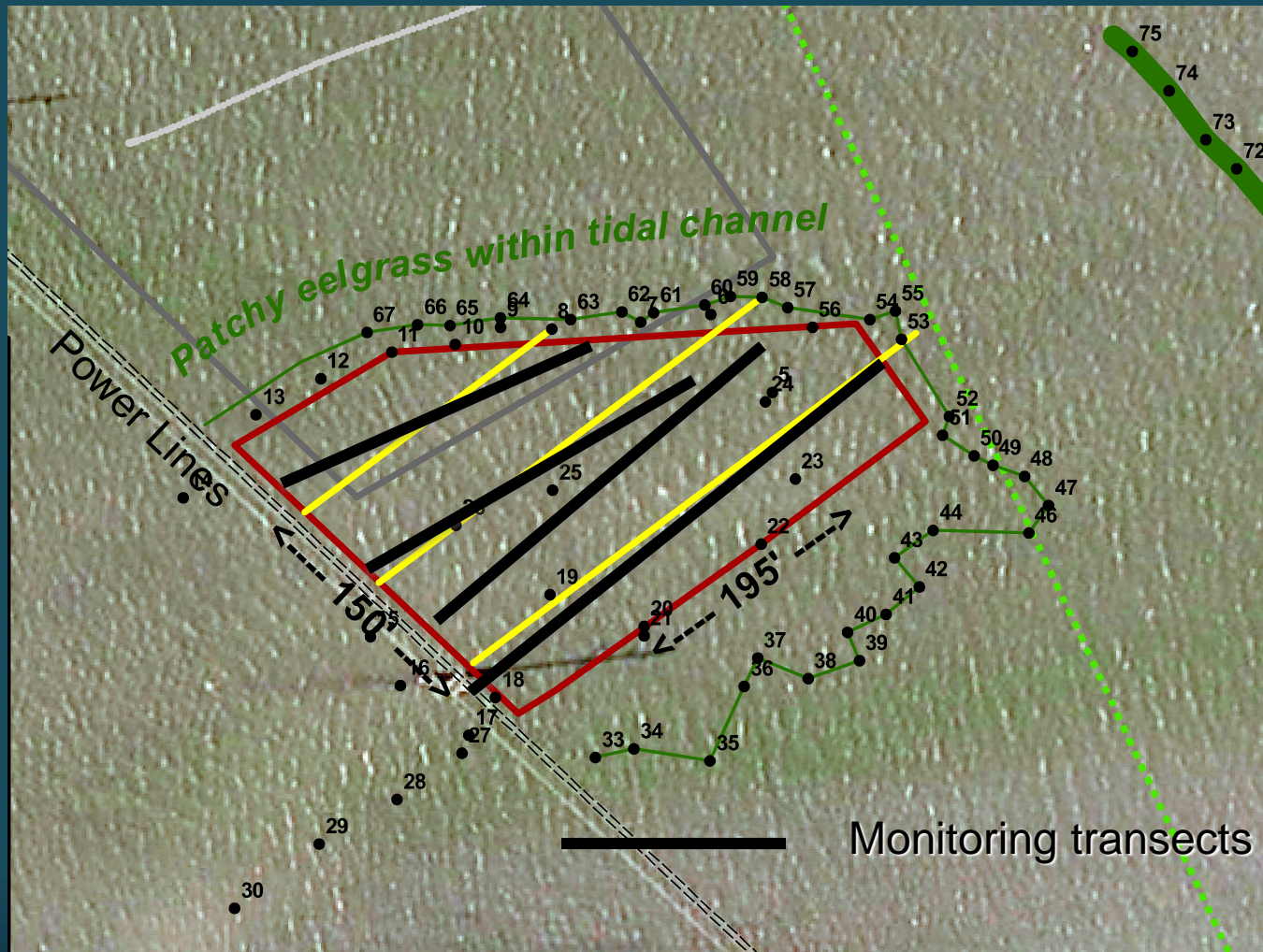




2015 & 2016 Monitoring



Monitoring Transects



Monitoring Data



Data	2015	2016
# quadrats	43	46
% shell cover	5%	7%
# spat counted	215	83
# adults	2	13

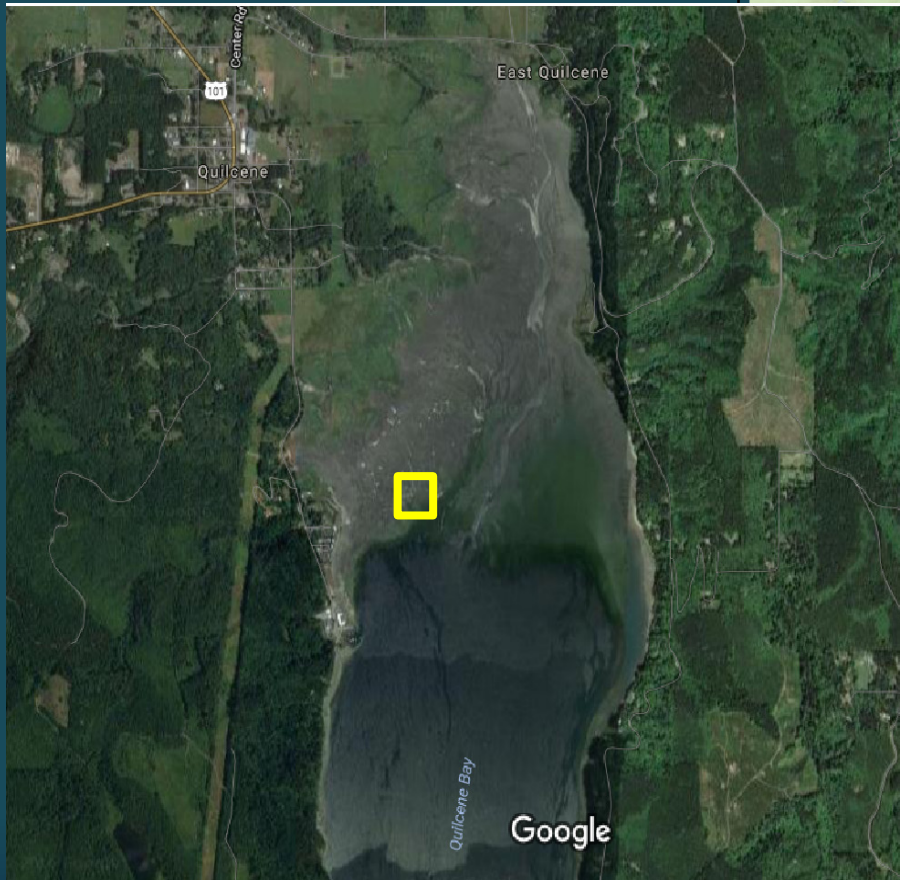
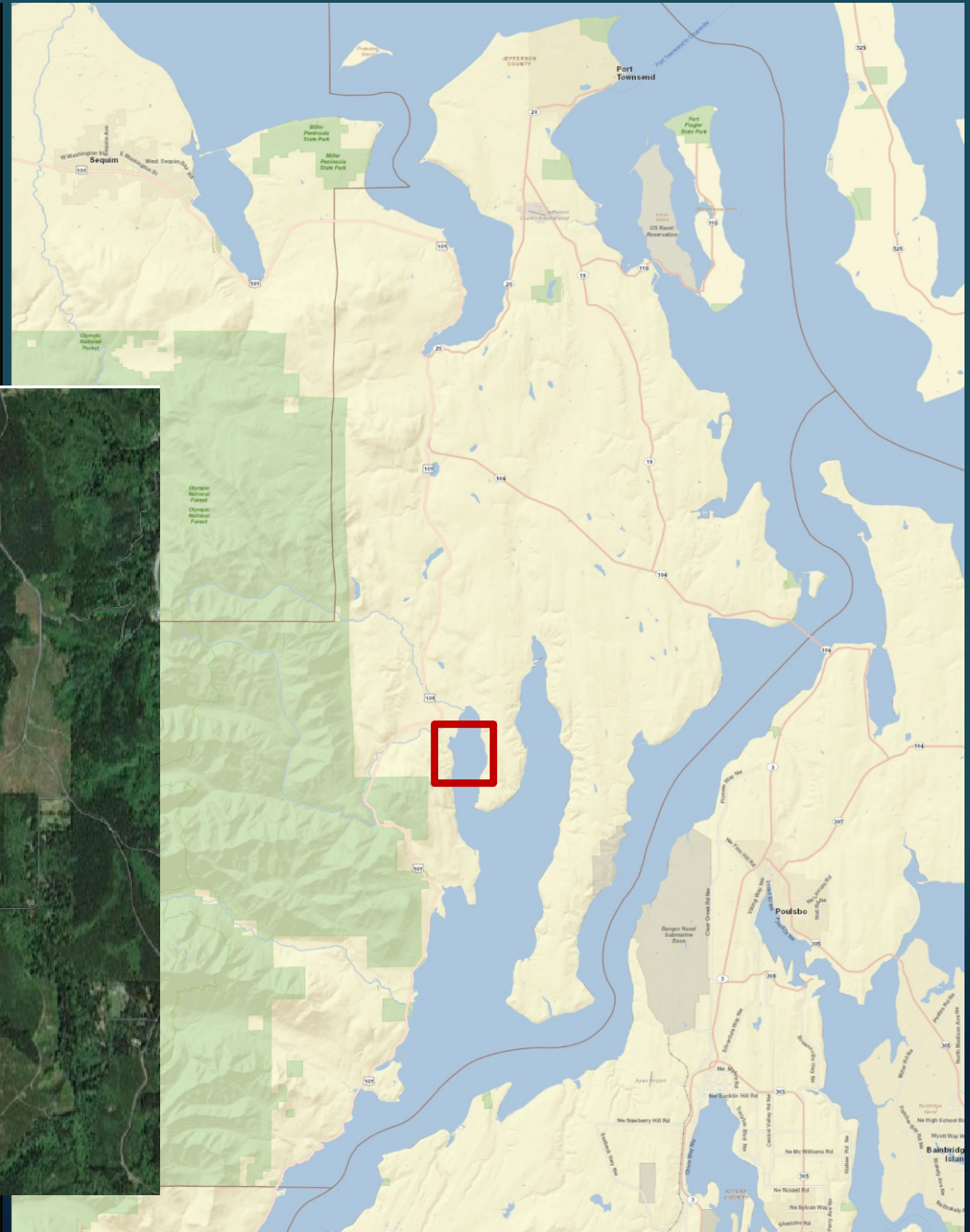


Quilcene Bay

Add new Olympia oysters



Quilcene Location



Deployed May 2016



Quilcene Test Plots



Quilcene Test Plots



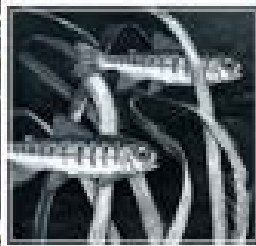
Quilcene Bay

Data	100 shell sample	Projected total
Avg spat ht	13.2 mm	
Oly spat #	610	17,000 spat
Species ratio	6 Oly:1.4 Pacific	

What Does Success Look Like?



- Long-term goals
- Consistent, local natural recruitment
- Increasing # mature oysters?



Jefferson County
**Marine
Resources
Committee**