

# Ranger Amber Forest, Washington State Parks and Recreation Commission

- Little about me:
  - 20 years with WA. State Parks! Love it, love it, love it. Best Career ever!!!!
  - 15 of those were spent at Larrabee State Park as a Ranger 2
  - We have experts in climate change and how it is affecting our parks. Those workers would be biologists, environmental specialists, parks planners and natural resource specialists
  - Currently, I am the area manager of 3 state parks in Whatcom County. They are Larrabee State Park, Birch Bay State Park and Peace Arch Historical State Park
  - This power point was put together by Lisa Lantz, Stewardship Manager – it is a short overview of Washington State Parks climate change adaptation

Lisa Lantz  
October 22, 2021

# Washington State Parks Climate Change Adaptation Plan



# Commission Climate Change Resolution

*“...that the Washington State Parks and Recreation Commission hereby directs that actions taken at all levels of the agency shall be evaluated in the context of climate change and directs staff to form an interdisciplinary team to develop a climate change preparedness plan based on best available science...”*



# Climate Change Adaptation Planning

## Preparing Washington State Parks for Climate Change

*A Climate Change Vulnerability Assessment for Washington State Parks*

June 2017



Prepared by  
The University of Washington Climate Impacts Group  
In partnership with  
The Washington State Parks and Recreation Commission



## WASHINGTON STATE PARKS CLIMATE CHANGE ADAPTATION PLAN

June 2019



©UW Climate Impacts Group, aerial support provided by LightHawk.

Prepared by  
The University of Washington, Climate Impacts Group

In Partnership with  
The Washington State Parks and Recreation Commission



## 4 Key Climate Vulnerabilities



Changes in precipitation and streamflow could limit access and damage facilities.



Changes in snowpack could affect winter visitation and revenue.



Sea level rise and related impacts could limit access to coastal parks and increase damage to coastal infrastructure.



Changes in ecosystem health and vegetation disturbance could increase closures and campsite cancellations.

# Adaptation Planning with Climate Impact Groups

- Priorities for adaptation
- Near-term (< 6 years) and longer term (> 6 years) adaptation actions
- Approaches for integrating adaptation actions into current management activities



# Adaptation Actions Identified

- 36 Ongoing Actions
- 20 Near-Term Actions
- 51 Long-Term Actions





# Ongoing Actions

- Actions agency is already doing that will enhance long-term climate resilience.
  - Example: Wrap structures in anticipation of fires.





# Near-Term Actions

- Actions agency will strive to make progress on in next 6 years.
  - Example: Inventory shoreline protection structures in light of sea level rise.



# Long-Term Actions

- Actions that will take more than 6 years.
  - Example: Increase height of bridges above waterways.



# Mainstreaming

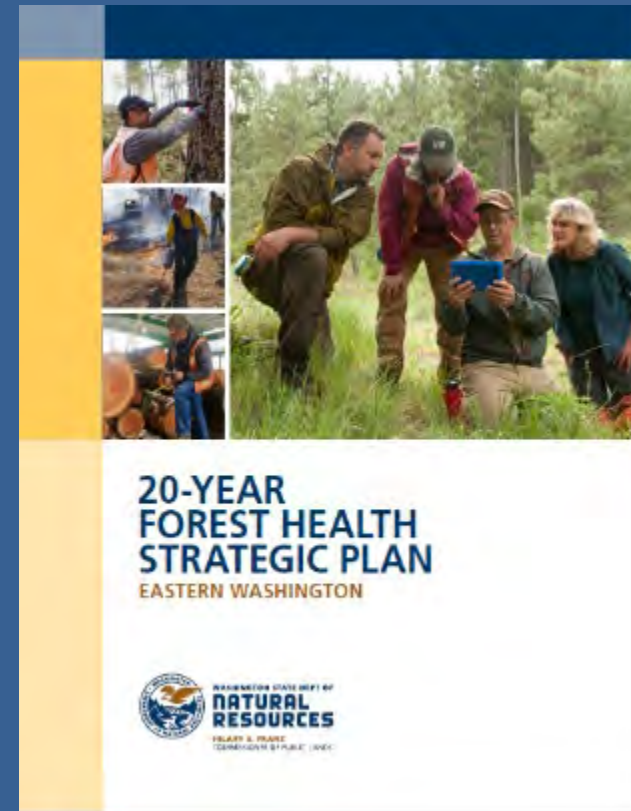
- Capital Project Design Standards, Guidelines, and Considerations
- Ten-Year Capital Plan
- Facilities Assessment
- Budget Development





# Mainstreaming

- Interagency Efforts
- Annual Work Plans
- Project-Specific Plans
- CAMP, Capital Project Pre-Design, Other Planning



# Supplemental Budget Request 2022

## Climate Change Resilience

- Climate change coordinator
- Inventories of at-risk facilities
- Ecological Integrity Assessments (EIA)
- Electric vehicle chargers





Birch Bay  
2020 Storm  
Damage, King  
tide











# King tide at Saltwater State Park 2020





25 Mile Creek  
State Park Fire  
2020







Dosewallips State Park flooding

# Thank You!

- Any questions feel free to email me  
@ [amber.forest@parks.wa.gov](mailto:amber.forest@parks.wa.gov)